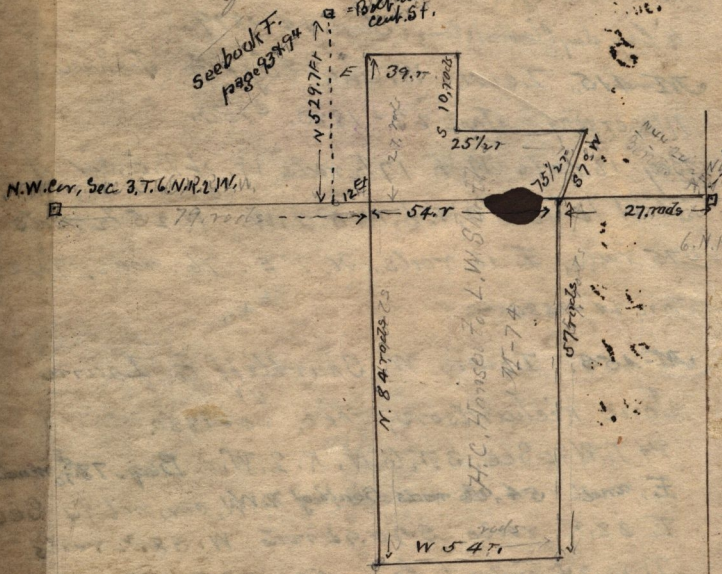


4-568 Lewis W. Shurtleff, to
 Thomas A. Furniss, Feb 17-1890
 500. Pt N.W. 1/4 Sec. 3, T. 6. N. R. 2. W.
 Beg. 78.8 rods E. & 57.7 rods S. of N.W.
 Cor. sd 1/4 Sec. E. 38.2 rods, N. 20.94
 rods W. 38.2 rods, S. 20.94 rods to beg

1-286- U.S. Pat. To Hans C. Hansen
 Apr. 15-1872, S 1/2 of N.W. 1/4 & Lots No
 3 & 4 of Sec. 3, T. 6. N. R. 2. W. 159.53 a



See Plat Book
 page 59